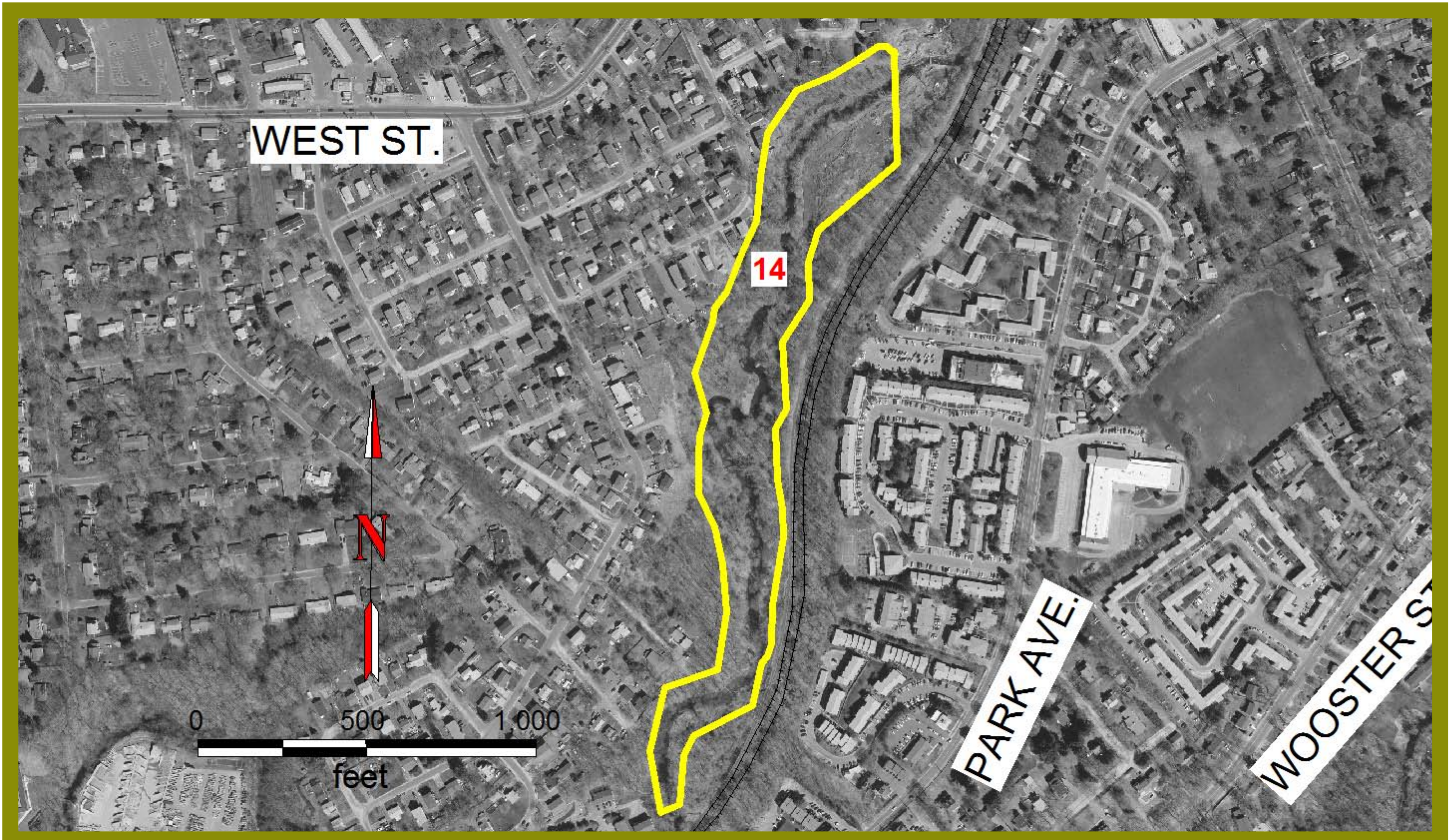



## South Center Danbury/Park Avenue Area



### Map 14

 = Property Boundaries of Land Trust Parcel # 14

#### Excerpts from The Land Trust of Danbury Property Database on Property 14:

**Location:** Oil Mill Road

**Donor:** Burton' Bridge LLC

**Size:** 6.04 acres

**Dominant Habitat:** Riverine and floodplain

**Hydrologic Character:** Floodplain draining to Still River

**Recreational Access:** No hiking trail, bushwhacking only

**Parking:** Limited parking on Oil Mill Road

**Unique site attributes:** Floodplain oasis in developed area around Still River