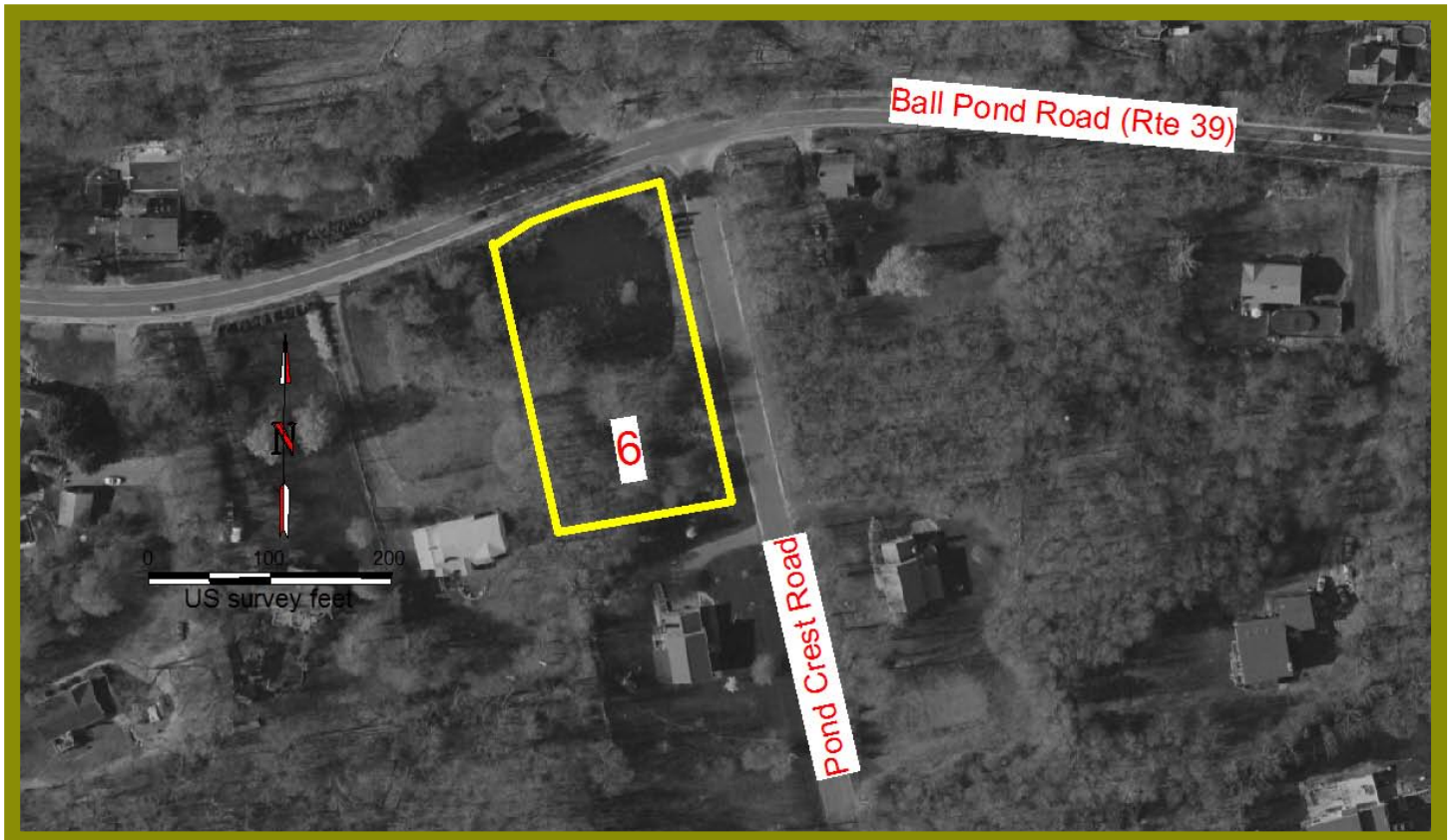


North Danbury/Ball Pond Road



Map 6

 = Property Boundaries of Land Trust Parcel # 6

Excerpts from The Land Trust of Danbury Property Database on Property 6:

Location: Ball Pond Road

Donor: Simone Corporation and Alain Greta

Size: .92 acres

Dominant Habitat: Pond, upland fill and wetland fringe

Hydrologic Character: Pond

Recreational Access: No hiking trails established

Parking: Parking is accessible for vehicles on North side of Pond Crest Road near Ball Pond Road

Unique site attributes: Small pond in advanced state of eutrophication