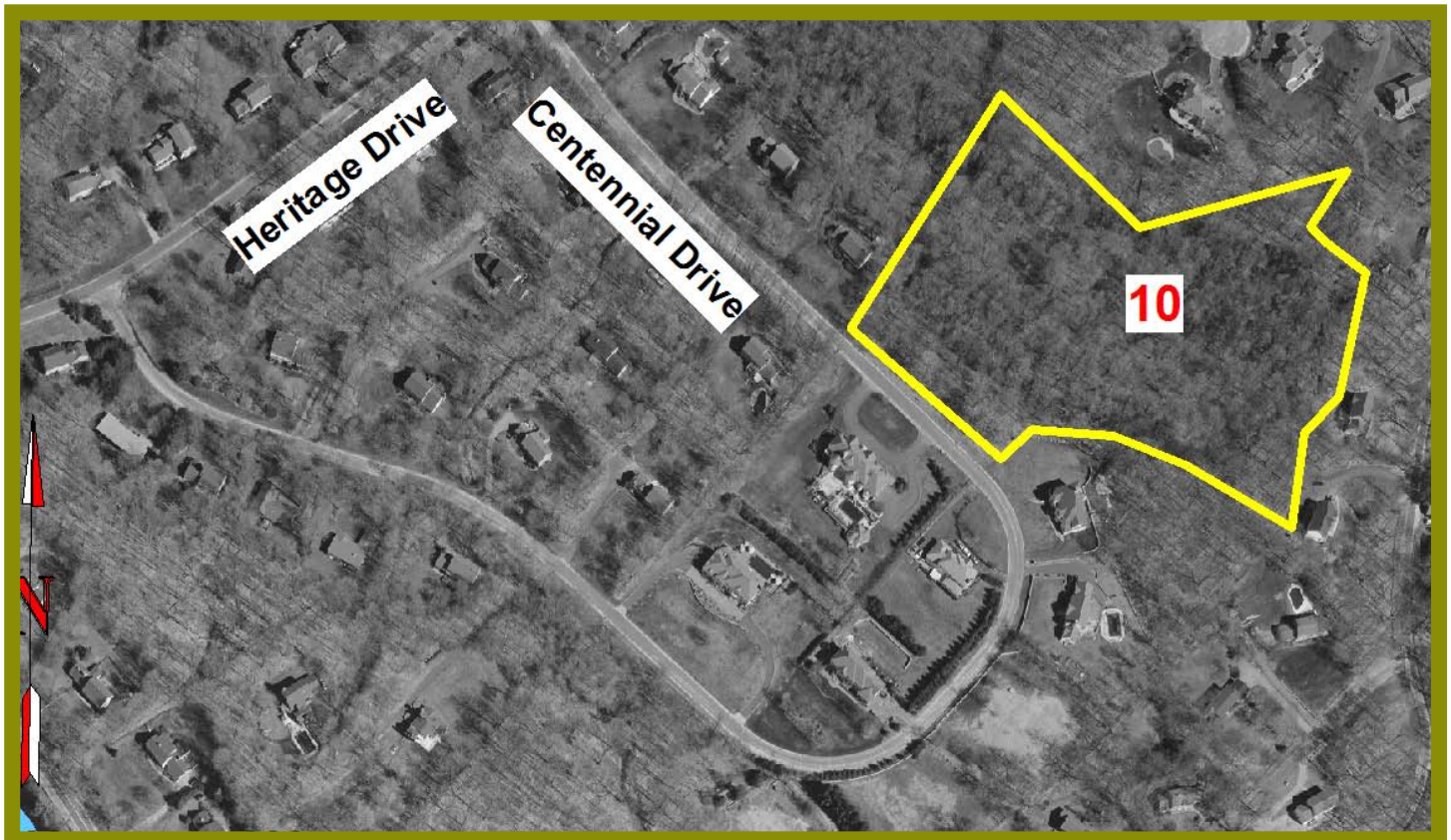



North Danbury/Centennial Drive



Map 10

 = Property Boundaries of Land Trust Parcel # 10

Excerpts from The Land Trust of Danbury Property Database on Property 10:

Location: Centennial Drive

Donor: Howard Bushe, Trustee

Size: 7.44 acres

Dominant Habitat: Upland forest

Hydrologic Character: Upland with small stream

Recreational Access: No hiking trail, bushwhacking only

Parking: Parking off Centennial Drive

Unique site attributes: Isolated forest tract with stream in area that is fully developed